



FOR YOUTH DEVELOPMENT®
FOR HEALTHY LIVING
FOR SOCIAL RESPONSIBILITY



**REGISTRATION OPENS:
YMCA MEMBERS April 1st
TO THE PUBLIC April 24!**

EXPLORE, DREAM, DISCOVER

AFTER SCHOOL CARE

- Grades: TK—5th
- After School Hours: Dismissal until 6:00pm
- Before School: offered at Atherwood, Big Springs, Hollow Hills and White Oak
- Weekly fees include pupil free days and select holidays
- State licensed, qualified staff, CPR & first aid certified
- Structured environment with engaging activities: homework time, arts and craft, sports, science and more!
- All school sites are subject to closure based on enrollment
- We accept CDR, CHS and Elop
- Financial Scholarship available



REGISTER TODAY! LIMITED SPACE AVAILABLE!

Questions? More Info? Contact Valerie Ross: vross@sevymca.org

www.sevymca.org • (805) 583-5338 ext. 4005

Not affiliated with or endorsed by the Simi Valley Unified School District

LOCATIONS

Atherwood Elementary: 2350 E. Greensward St

Big Springs Elementary: 3401 Big Springs Ave

Hollow Hills Elementary: 828 Gibson St

Justin Early Learners: 2245 Justin Ave (TK Only)

Katherine Elementary: 5455 Katherine St

Sycamore Elementary: 2100 Ravenna St

White Oak Elementary: 2201 Alscot Ave

WEEKLY FEES

Full Time Enrollment
5 days/week

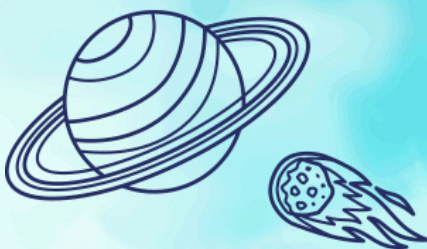
Part Time Enrollment
3days/week

Before School Enrollment
6:30am-school starts

\$155

\$120

\$55



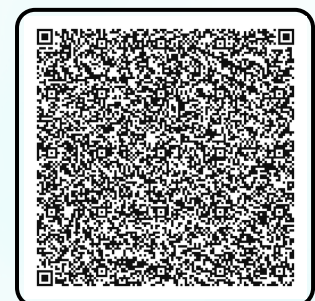
REGISTER

Online registration

\$50 deposit due at registration

NEW FAMILIES: State licensing

paperwork required to
complete registration



SCAN TO REGISTER

DISCLAIMERS

Depending on enrollment, all of the above school sites will be subject to closure.