



FOR YOUTH DEVELOPMENT®
FOR HEALTHY LIVING
FOR SOCIAL RESPONSIBILITY

REGISTRATION OPENS:
YMCA MEMBERS April 1
TO THE PUBLIC April 24

EXPLORE, DREAM, DISCOVER

AFTER SCHOOL CARE

- Grades: TK—5th
- After School Hours: Dismissal until 6:00pm
- Weekly fees include pupil free days and select holidays
- State licensed, qualified staff, CPR & first aid certified
- Structured environment with engaging activities: homework time, arts and craft, sports, science and more!
- All school sites are subject to closure based on enrollment
- We accept CDR and CHS
- Financial Scholarship available



REGISTER TODAY! LIMITED SPACE AVAILABLE!

Questions? More Info? Contact Sonia Garcia: sgarcia@sevmca.org

www.sevmca.org • (805) 583-5338 ext. 4004

Not affiliated with or endorsed by the Moorpark Unified School District

LOCATIONS

Peach Hill Academy: 13400 Christian Barrett Dr.,
Moorpark, Ca 93021

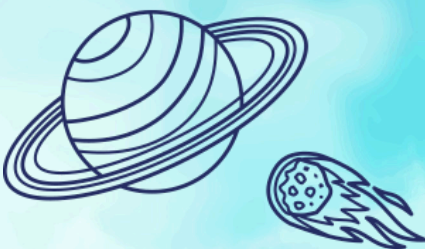
WEEKLY FEES

Full Time Enrollment
5 days/week

\$160

Part Time Enrollment
3 days/week

\$125



REGISTER

Online registration

\$50 deposit due at registration

NEW FAMILIES: State licensing

paperwork required to
complete registration



SCAN TO REGISTER

DISCLAIMERS

Depending on enrollment, all of the above school sites will be subject to closure.